



**Measuring Tools**

- 4' Level • 2' Level • Tape Measure • Pencil
- Protractor • Basco Measuring Sheet

## GUIDELINES FOR MEASURING

Ordering the correct size enclosure is the first step to a proper installation. The drawings on the following pages are designed to help you provide us with this information.

The final page can be used to hand draw any custom applications. Included below are helpful tips and recommendations for obtaining the needed measurements.

Please take a moment to review. We can never have too much information regarding your application.

*"Proper Preparation Prevents Poor Performance"*  
 –Author Unknown

**Checklist for Measuring**

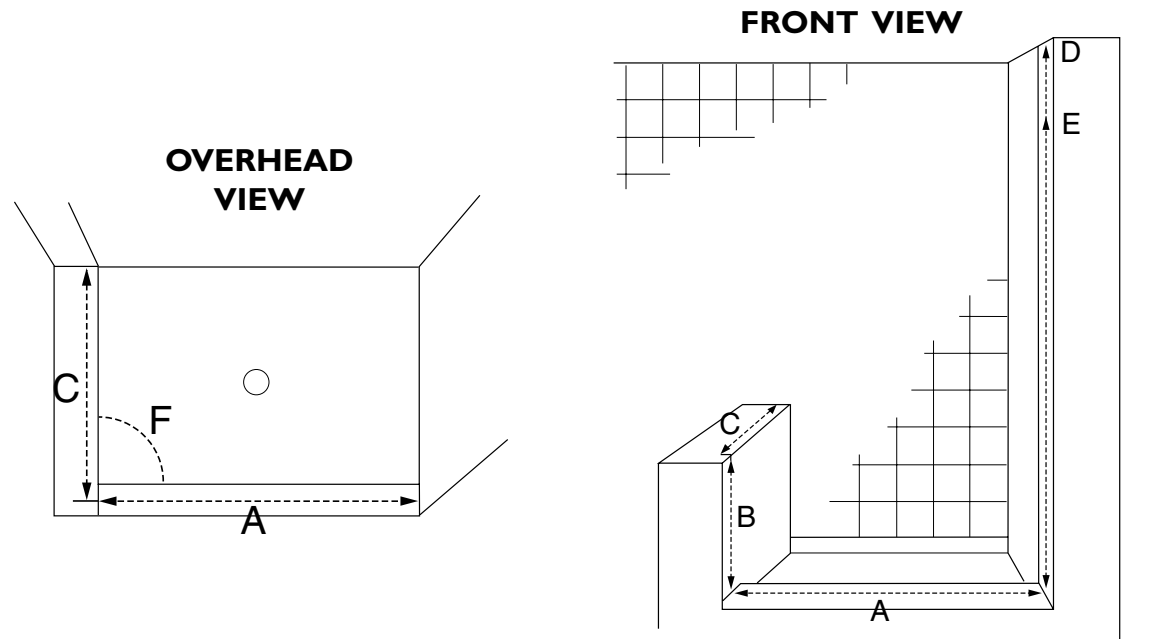
- ✓ Measuring must be done *after* finished wall material is in place.
- ✓ Measure each width or centerline (middle of threshold) as demonstrated by arrowed lines. Remember to allow for the body of the measuring tape.
- ✓ Measure maximum height available from top of tub deck or threshold to top of tile or fiberglass walls. *This measurement will assist your distributor in selecting the most appropriate standard height from Basco's Distributor Price List. Custom heights are also available. Steam tight units are designed to fill the entire opening.*
- ✓ Check all surfaces (including top of buttness if applicable) and walls for level. If any surface is out of level 3/8" or more, a tapered filler\* is recommended. Please indicate on drawing where out of level conditions exist.
- ✓ Indicate showerhead position on drawing with an "X".

\*Your distributor can provide part numbers and pricing for fillers from Basco's Parts Price List.

## Custom Application Measuring

- A. What is the centerline dimension of the threshold?
- B. What is the height of the buttness (if applicable)?
- C. What are the centerline dimensions of the return panel(s)?
- D. What is the maximum height the application will accept?
- E. Indicate what height unit you prefer. *(Check current price list for standard heights).*
- F. What is the degree of angle(s) on any return panel(s).

**Note:** Indicate on drawing where door and panel(s) are located and where showerhead is positioned. Also, please indicate any out of plumb/level conditions.



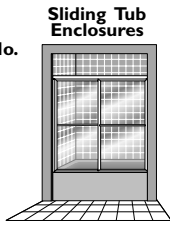


# Measurements For Your

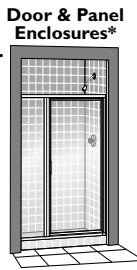


## Tub or Shower Door

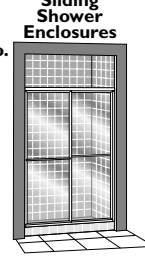
Unit No.	Sliding Tub Enclosures
2150	
6150	
4400	
3400	
2850	
4150	
2000	



Unit No.	Door & Panel Enclosures*
135	
735	
136	
736	
3813	



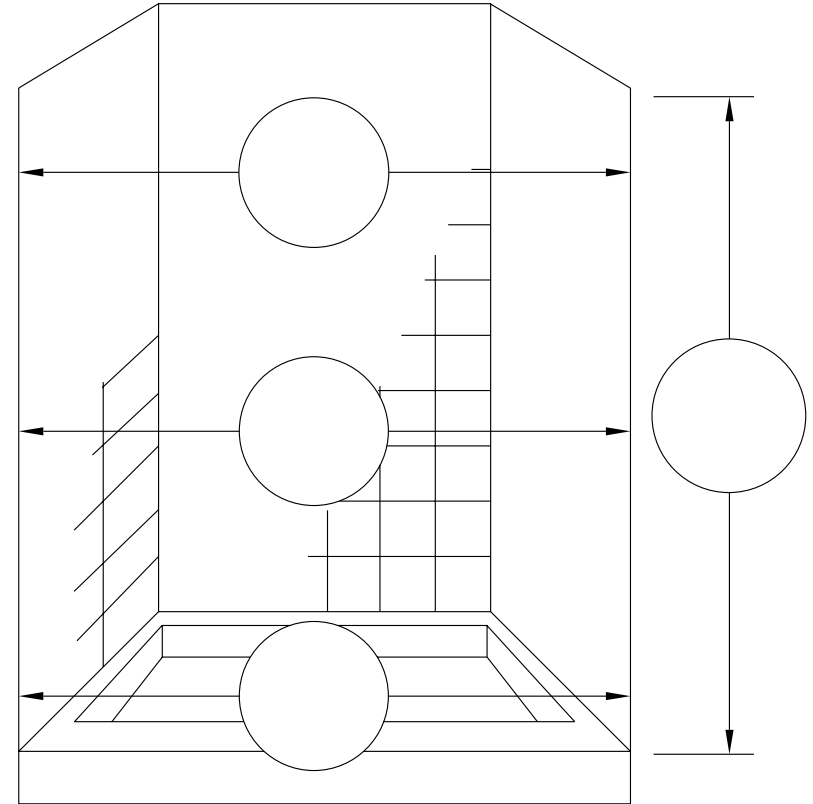
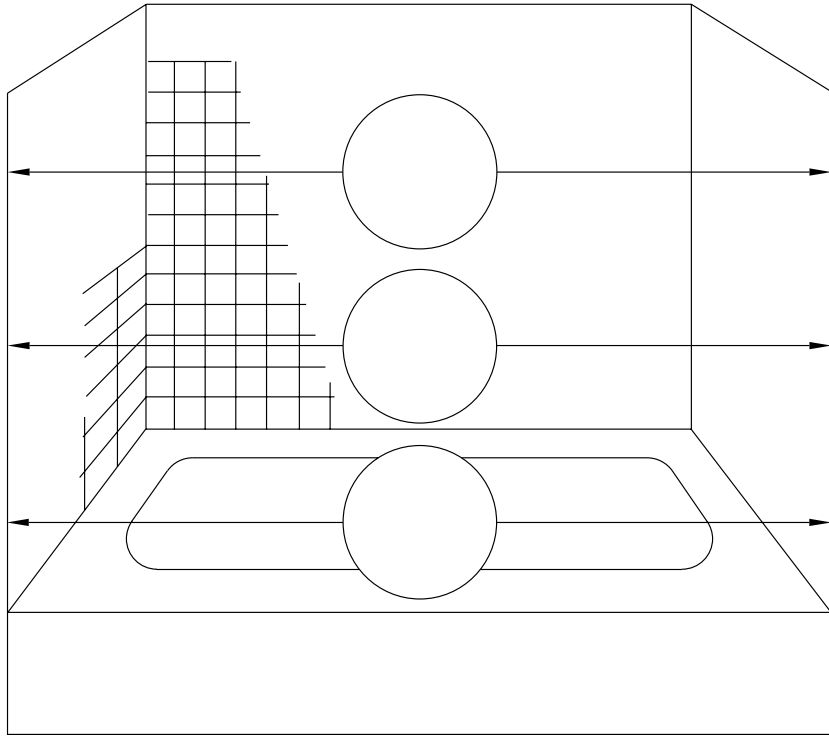
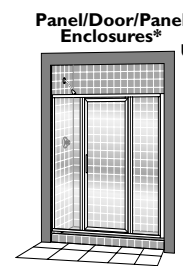
Unit No.	Sliding Shower Enclosures
3150	
7150	
4500	
3500	
3850	
5150	
3000	
3055	



Unit No.	Swing Doors
100	
200	
3600	
1000	
18S	
15	
16	
3800	



Unit No.	Panel/Door/Panel Enclosures*
125	
725	
126	
726	



Most fiberglass units have a radius where the tub deck/threshold surface and wall meet. Please measure the bottom width approximately 1" above the tub deck/threshold surface.

### Ordering Information

Distributor Name: \_\_\_\_\_ Distributor Location: \_\_\_\_\_

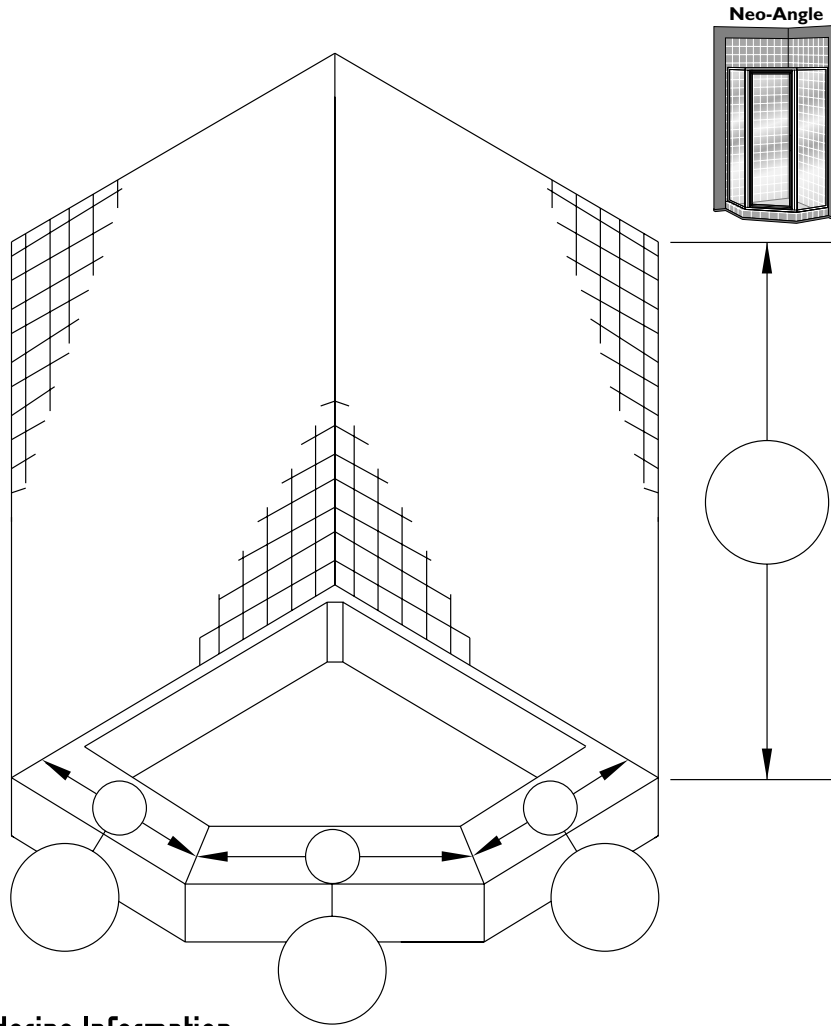
Distributor Contact: \_\_\_\_\_ Distributor Phone No: \_\_\_\_\_ P.O. #/Ship Instructions: \_\_\_\_\_

Basco Unit No: \_\_\_\_\_ Basco Unit Height: \_\_\_\_\_ Glass Style: \_\_\_\_\_ Frame Color: \_\_\_\_\_ Unit List Price: \_\_\_\_\_

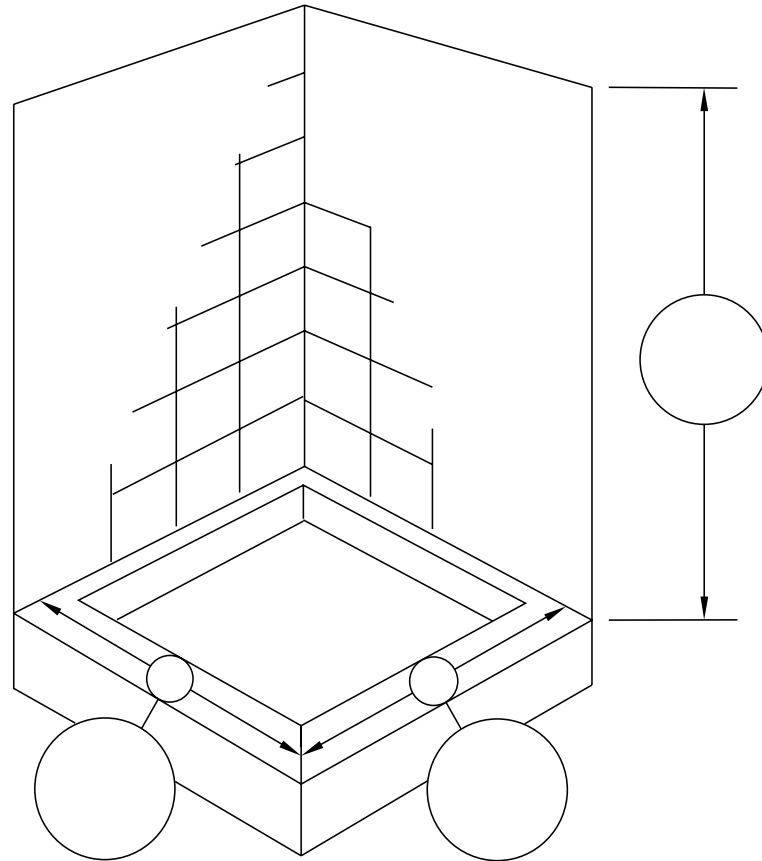
\*Quick N' Stall Option: **Yes No** Add-On Towel Bar: **Yes No** Basco Part No(s): \_\_\_\_\_ Part(s) List Price: \_\_\_\_\_

Fiberglass Make/Model No: \_\_\_\_\_ Customer Name/Comments: \_\_\_\_\_

# Measurements For Your Neo-Angle or 90° Corner Shower Door



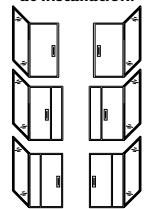
- Neo-Angle**
- |                 |
|-----------------|
| <b>Unit No.</b> |
| 160             |
| 760             |
| 161             |
| 761             |
| 3816            |



- 90° Corner Shower  
36"x48"**
- |                 |
|-----------------|
| <b>Unit No.</b> |
| 145             |
| 745             |
| 146             |
| 746             |
| 3814            |

- 90° Corner Shower  
48"x48"**
- |                 |
|-----------------|
| <b>Unit No.</b> |
| 150             |
| 750             |
| 151             |
| 751             |
| 3815            |

**Please Circle  
Panel Configuration**  
Door is universal,  
door swing is determined  
at installation.



## Ordering Information

Distributor Name: \_\_\_\_\_ Distributor Location: \_\_\_\_\_

Distributor Contact: \_\_\_\_\_ Distributor Phone No: \_\_\_\_\_ P.O. #/Ship Instructions: \_\_\_\_\_

Basco Unit No: \_\_\_\_\_ Basco Unit Height: \_\_\_\_\_ Glass Style: \_\_\_\_\_ Frame Color: \_\_\_\_\_ Unit List Price: \_\_\_\_\_

\*Quick N' Stall Option: **Yes No** Add-On Towel Bar: **Yes No** Basco Part No(s): \_\_\_\_\_ Part(s) List Price: \_\_\_\_\_

Fiberglass Make/Model No: \_\_\_\_\_ Customer Name/Comments: \_\_\_\_\_